

BELLAIRE PULTNEY TOWNSHIP

BELMONT COUNTY OHIO
 FRED F. BENNETT COUNTY ENGINEER

SCALE IN FEET
 0 50 100

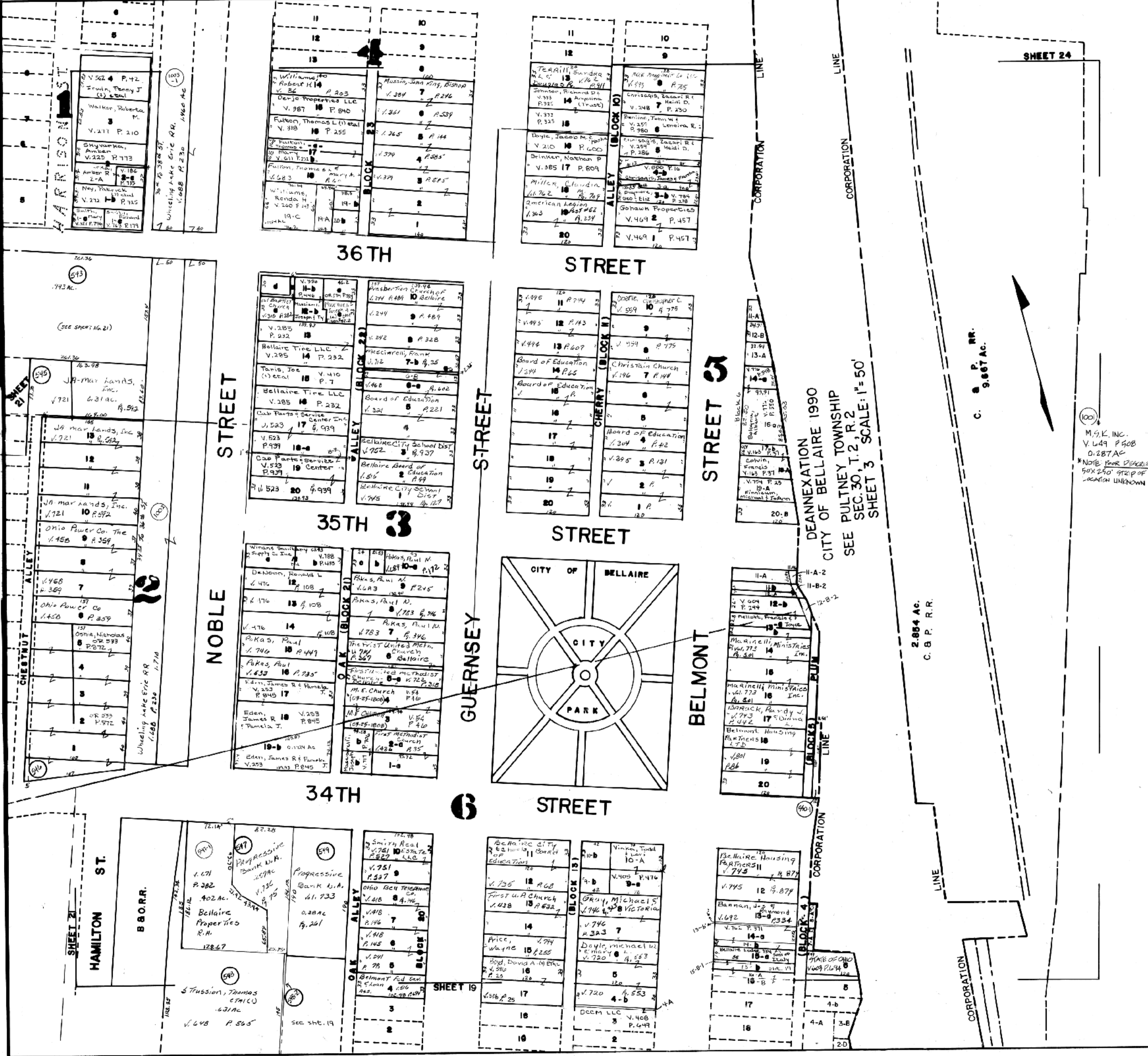
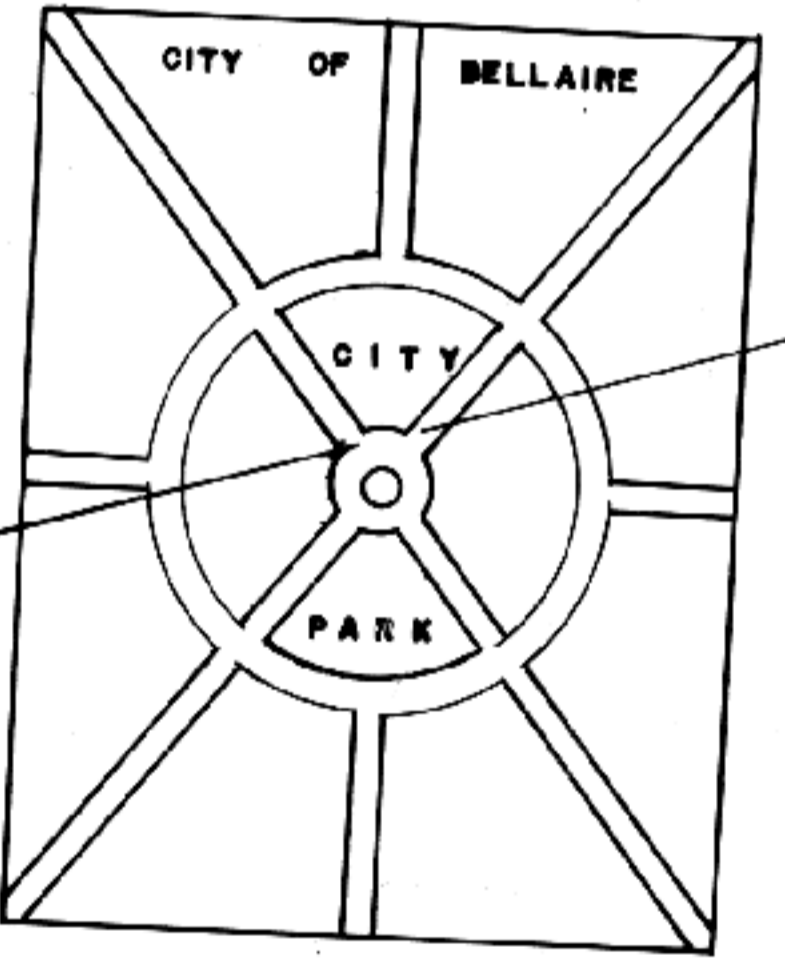
REVISED 4-12-13, 5-14, 8-13, 9-13

LOT/ADD	NAME	SQ. FT.	AC.
11-0-3	WPY Limited Partnership	401	6.4
11-A-4	Brinker, Randy M.	250	3.7
11-B-3	Maas, Glenn Frank R.	137	2.0
11-C-3	Heath, Chris W.	702	10.2
11-D-3	Parus, Paul	610	8.8
12-A-4	Donahee, Harold A. & Frances	672	9.8
12-B-4	Donahee, Harold A. & Frances	672	9.8
13-B-4	Walker, Roy L. (etal) (trust)	397	5.8
14-B-4	Walker, Roy L. (etal) (trust)	397	5.8
15-B-4	Walker, Roy L. (etal) (trust)	397	5.8
16-B-4	Walker, Roy L. (etal) (trust)	397	5.8
17-A-4	Bel. Co. Sewer Authority #1	635	9.2
17-B-4	Bel. Co. Sewer Authority #1	635	9.2
17-C-4	Bel. Co. Sewer Authority #1	635	9.2
17-D-4	Bel. Co. Sewer Authority #1	635	9.2
17-E-4	Bel. Co. Sewer Authority #1	635	9.2
17-F-4	Bel. Co. Sewer Authority #1	635	9.2
17-G-4	Bel. Co. Sewer Authority #1	635	9.2
17-H-4	Bel. Co. Sewer Authority #1	635	9.2
17-I-4	Bel. Co. Sewer Authority #1	635	9.2
17-J-4	Bel. Co. Sewer Authority #1	635	9.2
17-K-4	Bel. Co. Sewer Authority #1	635	9.2
17-L-4	Bel. Co. Sewer Authority #1	635	9.2
17-M-4	Bel. Co. Sewer Authority #1	635	9.2
17-N-4	Bel. Co. Sewer Authority #1	635	9.2
17-O-4	Bel. Co. Sewer Authority #1	635	9.2
17-P-4	Bel. Co. Sewer Authority #1	635	9.2
17-Q-4	Bel. Co. Sewer Authority #1	635	9.2
17-R-4	Bel. Co. Sewer Authority #1	635	9.2
17-S-4	Bel. Co. Sewer Authority #1	635	9.2
17-T-4	Bel. Co. Sewer Authority #1	635	9.2
17-U-4	Bel. Co. Sewer Authority #1	635	9.2
17-V-4	Bel. Co. Sewer Authority #1	635	9.2
17-W-4	Bel. Co. Sewer Authority #1	635	9.2
17-X-4	Bel. Co. Sewer Authority #1	635	9.2
17-Y-4	Bel. Co. Sewer Authority #1	635	9.2
17-Z-4	Bel. Co. Sewer Authority #1	635	9.2
18-A-4	Bel. Co. Sewer Authority #1	635	9.2
18-B-4	Bel. Co. Sewer Authority #1	635	9.2
18-C-4	Bel. Co. Sewer Authority #1	635	9.2
18-D-4	Bel. Co. Sewer Authority #1	635	9.2
18-E-4	Bel. Co. Sewer Authority #1	635	9.2
18-F-4	Bel. Co. Sewer Authority #1	635	9.2
18-G-4	Bel. Co. Sewer Authority #1	635	9.2
18-H-4	Bel. Co. Sewer Authority #1	635	9.2
18-I-4	Bel. Co. Sewer Authority #1	635	9.2
18-J-4	Bel. Co. Sewer Authority #1	635	9.2
18-K-4	Bel. Co. Sewer Authority #1	635	9.2
18-L-4	Bel. Co. Sewer Authority #1	635	9.2
18-M-4	Bel. Co. Sewer Authority #1	635	9.2
18-N-4	Bel. Co. Sewer Authority #1	635	9.2
18-O-4	Bel. Co. Sewer Authority #1	635	9.2
18-P-4	Bel. Co. Sewer Authority #1	635	9.2
18-Q-4	Bel. Co. Sewer Authority #1	635	9.2
18-R-4	Bel. Co. Sewer Authority #1	635	9.2
18-S-4	Bel. Co. Sewer Authority #1	635	9.2
18-T-4	Bel. Co. Sewer Authority #1	635	9.2
18-U-4	Bel. Co. Sewer Authority #1	635	9.2
18-V-4	Bel. Co. Sewer Authority #1	635	9.2
18-W-4	Bel. Co. Sewer Authority #1	635	9.2
18-X-4	Bel. Co. Sewer Authority #1	635	9.2
18-Y-4	Bel. Co. Sewer Authority #1	635	9.2
18-Z-4	Bel. Co. Sewer Authority #1	635	9.2
19-A-4	Bel. Co. Sewer Authority #1	635	9.2
19-B-4	Bel. Co. Sewer Authority #1	635	9.2
19-C-4	Bel. Co. Sewer Authority #1	635	9.2
19-D-4	Bel. Co. Sewer Authority #1	635	9.2
19-E-4	Bel. Co. Sewer Authority #1	635	9.2
19-F-4	Bel. Co. Sewer Authority #1	635	9.2
19-G-4	Bel. Co. Sewer Authority #1	635	9.2
19-H-4	Bel. Co. Sewer Authority #1	635	9.2
19-I-4	Bel. Co. Sewer Authority #1	635	9.2
19-J-4	Bel. Co. Sewer Authority #1	635	9.2
19-K-4	Bel. Co. Sewer Authority #1	635	9.2
19-L-4	Bel. Co. Sewer Authority #1	635	9.2
19-M-4	Bel. Co. Sewer Authority #1	635	9.2
19-N-4	Bel. Co. Sewer Authority #1	635	9.2
19-O-4	Bel. Co. Sewer Authority #1	635	9.2
19-P-4	Bel. Co. Sewer Authority #1	635	9.2
19-Q-4	Bel. Co. Sewer Authority #1	635	9.2
19-R-4	Bel. Co. Sewer Authority #1	635	9.2
19-S-4	Bel. Co. Sewer Authority #1	635	9.2
19-T-4	Bel. Co. Sewer Authority #1	635	9.2
19-U-4	Bel. Co. Sewer Authority #1	635	9.2
19-V-4	Bel. Co. Sewer Authority #1	635	9.2
19-W-4	Bel. Co. Sewer Authority #1	635	9.2
19-X-4	Bel. Co. Sewer Authority #1	635	9.2
19-Y-4	Bel. Co. Sewer Authority #1	635	9.2
19-Z-4	Bel. Co. Sewer Authority #1	635	9.2
20-A-4	Bel. Co. Sewer Authority #1	635	9.2
20-B-4	Bel. Co. Sewer Authority #1	635	9.2
20-C-4	Bel. Co. Sewer Authority #1	635	9.2
20-D-4	Bel. Co. Sewer Authority #1	635	9.2
20-E-4	Bel. Co. Sewer Authority #1	635	9.2
20-F-4	Bel. Co. Sewer Authority #1	635	9.2
20-G-4	Bel. Co. Sewer Authority #1	635	9.2
20-H-4	Bel. Co. Sewer Authority #1	635	9.2
20-I-4	Bel. Co. Sewer Authority #1	635	9.2
20-J-4	Bel. Co. Sewer Authority #1	635	9.2
20-K-4	Bel. Co. Sewer Authority #1	635	9.2
20-L-4	Bel. Co. Sewer Authority #1	635	9.2
20-M-4	Bel. Co. Sewer Authority #1	635	9.2
20-N-4	Bel. Co. Sewer Authority #1	635	9.2
20-O-4	Bel. Co. Sewer Authority #1	635	9.2
20-P-4	Bel. Co. Sewer Authority #1	635	9.2
20-Q-4	Bel. Co. Sewer Authority #1	635	9.2
20-R-4	Bel. Co. Sewer Authority #1	635	9.2
20-S-4	Bel. Co. Sewer Authority #1	635	9.2
20-T-4	Bel. Co. Sewer Authority #1	635	9.2
20-U-4	Bel. Co. Sewer Authority #1	635	9.2
20-V-4	Bel. Co. Sewer Authority #1	635	9.2
20-W-4	Bel. Co. Sewer Authority #1	635	9.2
20-X-4	Bel. Co. Sewer Authority #1	635	9.2
20-Y-4	Bel. Co. Sewer Authority #1	635	9.2
20-Z-4	Bel. Co. Sewer Authority #1	635	9.2

M.S.K. INC.
 V. 149 P. 908
 0.287 AC
 NOTE: FOR DESTRUCTION
 BOX 250, 972 P OF LAND
 LOCATION UNKNOWN

C. S. P. RR.
 9.667 AC.

2.854 AC.
 C. S. P. R.R.



SHEET 21

SHEET 21

SHEET 19

SHEET 24

Lot	Area	Owner
1 KELLY'S SUB-DIV LOT 10	8	841
2 CARROLL ARMSTRONG	8	842
3 RODEFER 2nd ADD.	8	83
4 RODEFER 3rd ADD.	8	85
5 RODEFER 1st ADD.	8	86-88
6 CITY OF BELLAIRE	8	89-94

20-1 Bellair 548-4
 11/14/20 now #19-B